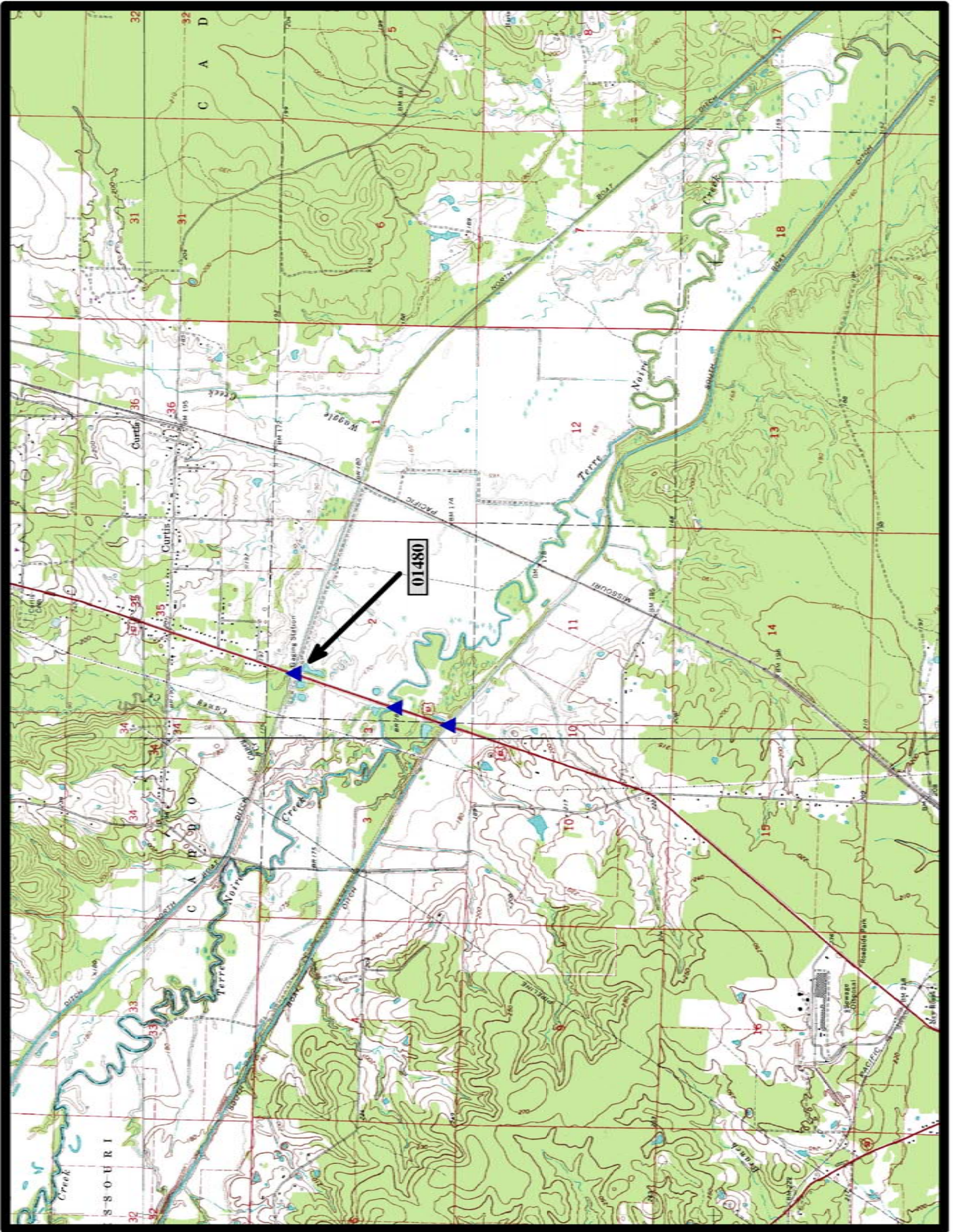




HISTORIC BRIDGE #01480
US HIGHWAY 67
CLARK COUNTY
PARKER PONY TRUSS
CROSSES - NORTH BOAT DITCH
DATE OF CONSTRUCTION - 1931
BUILDER - VIRGINIA BRIDGE & IRON COMPANY, ROANOKE, VA
HISTORIC BRIDGE INVENTORY DATE - 2005
SHPO NUMBER - CL0953
HAER NUMBER -
DATE LISTED ON NATIONAL REGISTER -
LAT./LONG. 33:29:20.89, -93:07:10.15



↑
North

Curtis 7.5 min. Quad



HISTORIC BRIDGE #01630
US HIGHWAY 67
HEMPSTEAD COUNTY
PARKER PONY TRUSS
CROSSES - TERRE ROUGE CREEK
DATE OF CONSTRUCTION - 1931
BUILDER - VIRGINIA BRIDGE & IRON COMPANY, ROANOKE, VA
HISTORIC BRIDGE INVENTORY DATE - 2005
SHPO NUMBER - HE0797
HAER NUMBER -
DATE LISTED ON NATIONAL REGISTER -
LAT./LONG. 33:42:33.09, -93:30:37.49

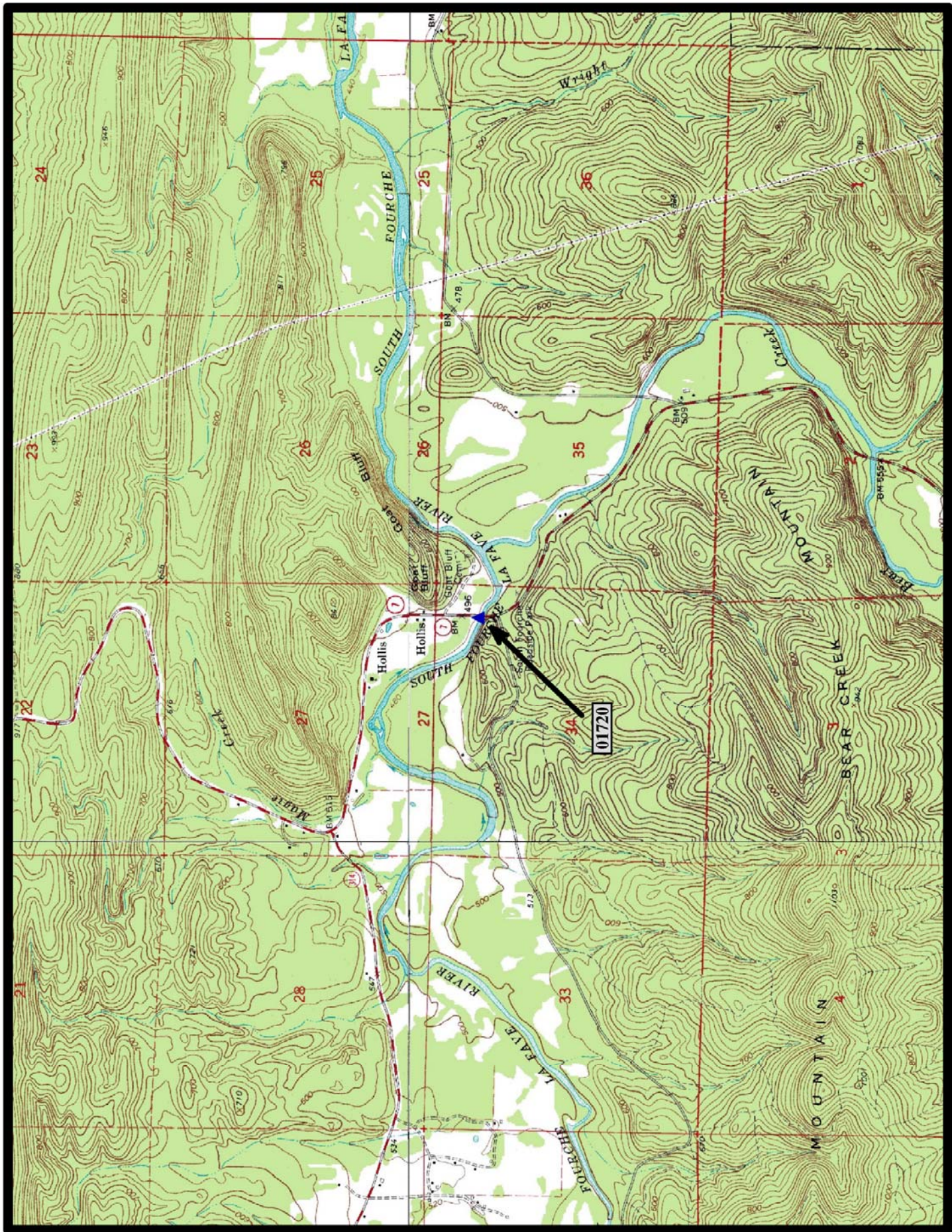


North

Hope 7.5 min. Quad



HISTORIC BRIDGE #01720
STATE HIGHWAY 7
PERRY COUNTY
PARKER PONY TRUSS
CROSSES - SOUTH FOURCHE LAFAVE RIVER
DATE OF CONSTRUCTION - 1933
BUILDER - MCEACHIN & MCEACHIN, LITTLE ROCK, AR
HISTORIC BRIDGE INVENTORY DATE - 2005
SHPO NUMBER - PE0088
HAER NUMBER -
DATE LISTED ON NATIONAL REGISTER - 9/24/2004
LAT./LONG. 34:52:16.82, -93:06:38.13

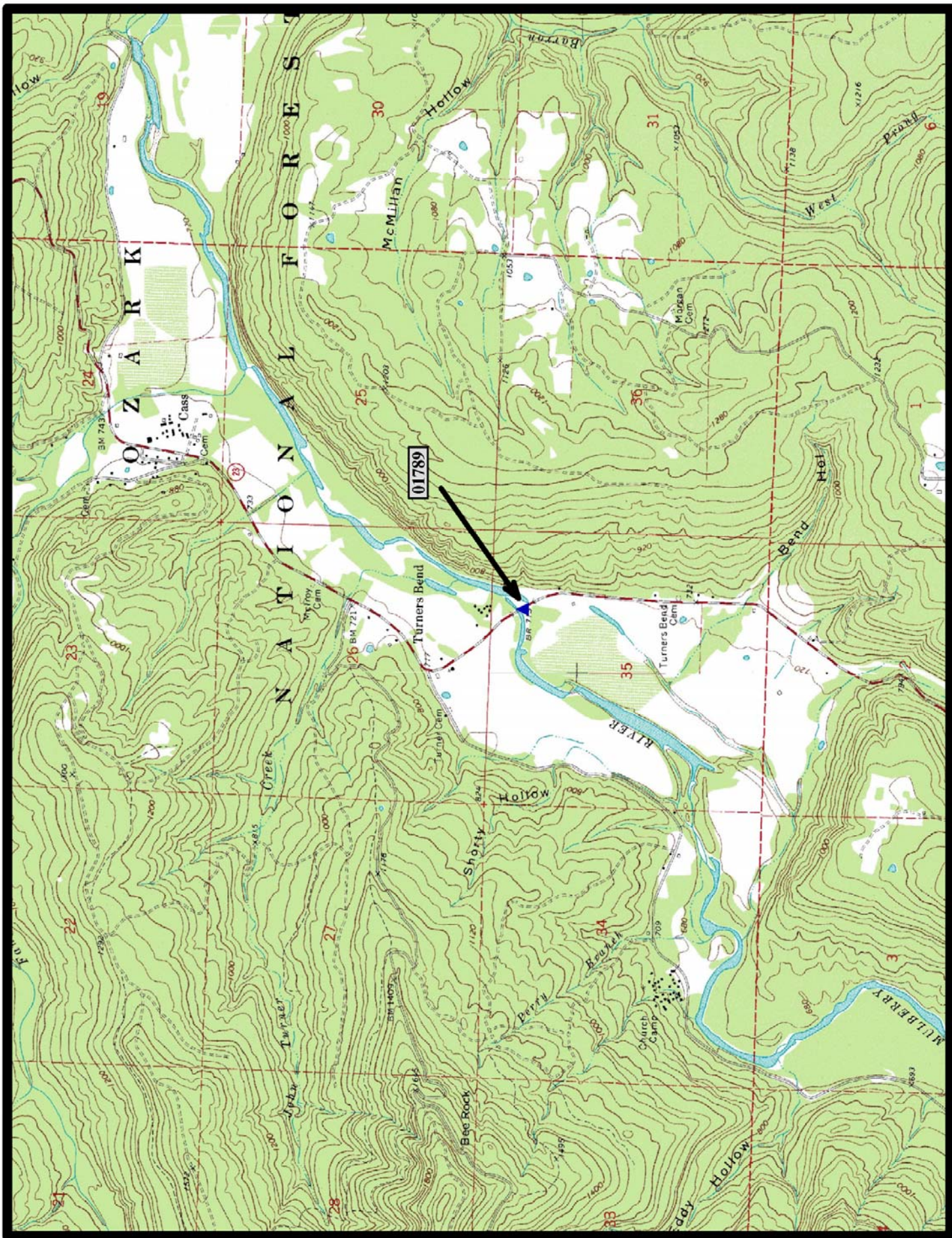


↑
North

Nimrod SE 7.5 min. Quad



HISTORIC BRIDGE #01789
STATE HIGHWAY 23
FRANKLIN COUNTY
PARKER PONY TRUSS
CROSSES - MULBERRY RIVER
DATE OF CONSTRUCTION - 1935
BUILDER - MCEACHIN & MCEACHIN, LITTLE ROCK, AR
HISTORIC BRIDGE INVENTORY DATE - 2005
SHPO NUMBER - FR0192
HAER NUMBER -
DATE LISTED ON NATIONAL REGISTER - 1/24/2007
LAT./LONG. 35:40:10.25, -93:49:45.15

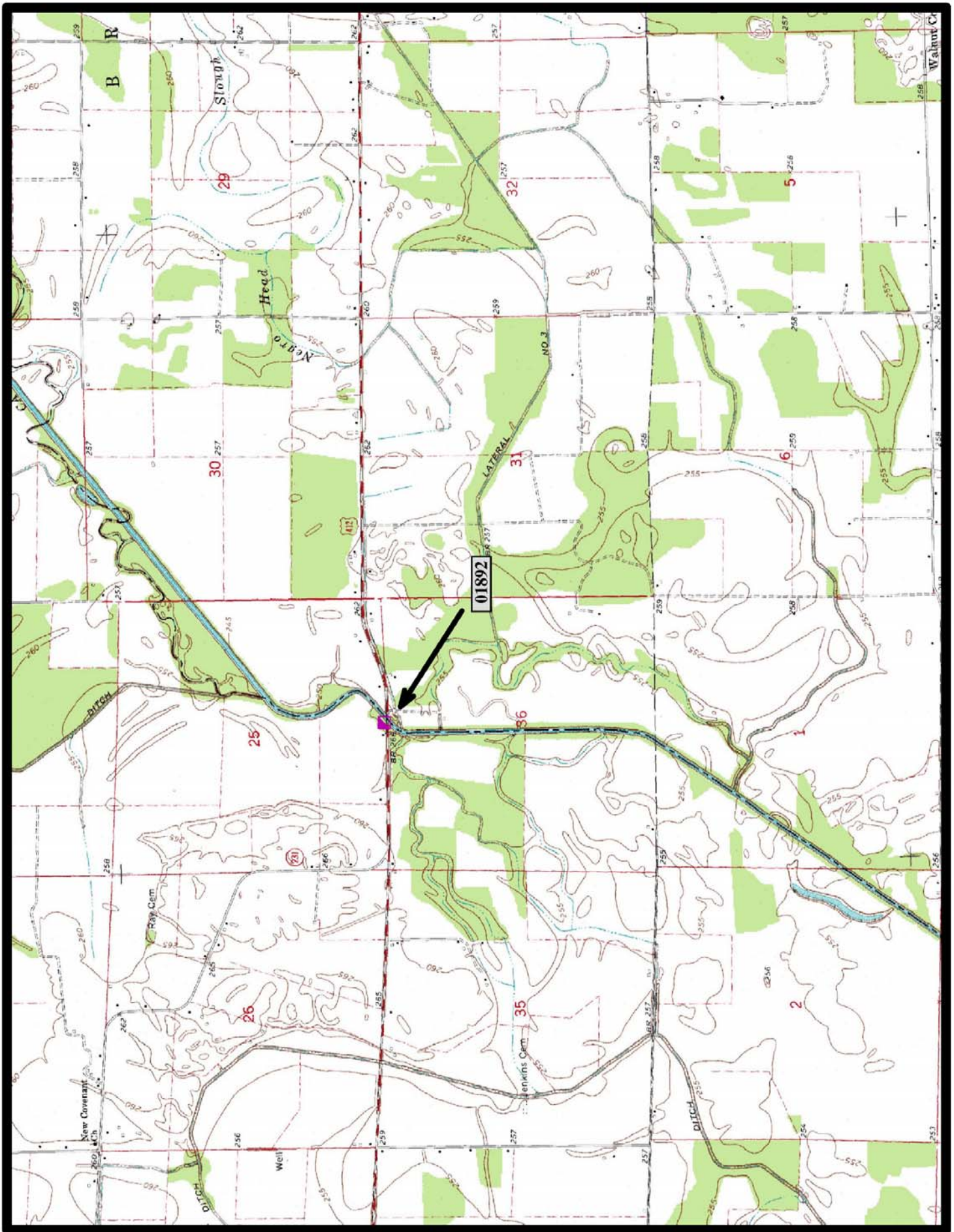


North

Cass 7.5 min. Quad



PRESERVED HISTORIC BRIDGE #01892
NEXT TO US HIGHWAY 412
LAWRENCE COUNTY
PARKER PONY TRUSS
CROSSES - CACHE RIVER
DATE OF CONSTRUCTION - 1934
BUILDER - VINCENNES BRIDGE COMPANY, VINCENNES, IN
HISTORIC BRIDGE INVENTORY DATE - 1987
SHPO NUMBER - LW0040
HAER NUMBER - AR-25
DATE LISTED ON NATIONAL REGISTER - 4/9/1990
LAT./LONG. 36:04:09.174, -90:49:25.65



↑
North

Walnut Ridge SE 7.5 min. Quad